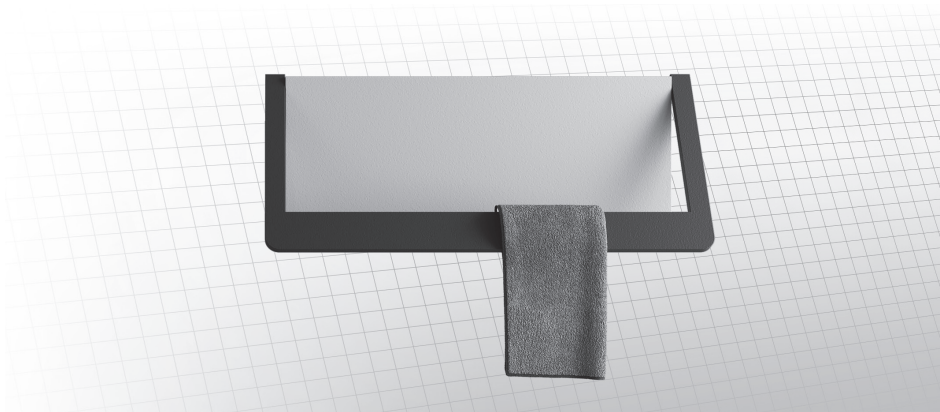


## USER MANUAL



**MODELLI:**  
Window 550 hydro  
Window 1100 hydro

[www.cordivari.com](http://www.cordivari.com)  
[www.cordivaridesign.com](http://www.cordivaridesign.com)

1. General warnings..... 8

    1.1 Manufacturer liability ..... 9

    1.2 Disposal..... 9

2. General information ..... 9

3. Information for the user..... 9

4. Installer information ..... 9

5. Positioning in bathrooms..... 10

6. Wall mounting ..... 10

7. Hydraulic connection..... 10

## User manual

### 1. General warnings

Dear Customer,

Thank you for choosing our product. Carefully read the instructions before installing and/or using the appliance.

- It is recommended to have all installation and adjustment operations performed by qualified personnel.

- Once the product is removed from the package check its integrity. If the product is damaged, do not use it and contact the Cordivari assistance network.

- **WARNING** - To avoid hazardous situations for little children, it is recommended to install the product so that the heating handle is at a height of at least 600 mm from the ground

- **WARNING** - Some parts of this product may become very hot and cause scalding. Pay extra care when children or vulnerable people are present.

- Unsupervised children under the age of 3 must be kept at a safe distance from the appliance.

- This appliance cannot be used by children aged 8 years or older and by people with

reduced physical, sensory and mental capabilities, or with no experience and the required knowledge unless they are supervised or they have received instructions on the safe use of the appliance and have understood inherent hazards.

- Children must not play with the appliance;

- Cleaning and maintenance operations are intended to be carried out by the user and must not be carried out by children without supervision;

- During opening or closing, the handle may cause injury;

- It is forbidden to sit, climb or hang from the handle when it is open;

- When opening and closing the handle, pay attention to children and people/animals in the vicinity;

- **Risk of injury!** Due to their small fingers, children can injure themselves in the space between the handle and the body of the towel warmer when closing it. Keep children away;

- The maximum weight that can be placed on the handle, or it will be closed, is 5 kg.

- Do not install the appliance near curtains, other flammable materials, fuels or pressurised containers;

- Drying washed fabric on the Radiators is not recommended

### 1.1 Manufacturer liability

The manufacturer declines any liability for damages to persons and property caused by:

- **Use of the appliance other than intended;**
- **Non-observance of the user manual instructions;**
- **Tampering with even just one part of the appliance;**
- **Use of non-original spare parts**

### 1.2 Disposal

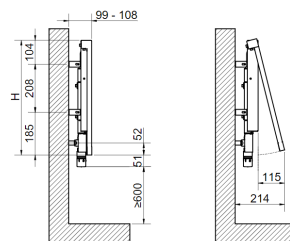
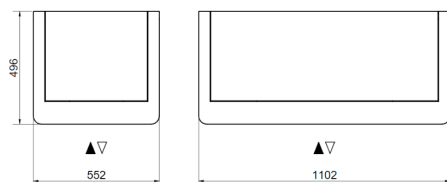


At the end of its working life, this appliance must be delivered to the special collection facilities for recycling, since it is not a standard domestic waste. In case of replacement, it can be delivered to your distributor.

This management of the end of the life of a product allows us to preserve our environment and to limit the use of natural resources.

## 2. General information

The user instructions as per this booklet refer to the Cordivari Design towel warmer model Window 550 hydro or Window 1100 hydro.



The exclusively designed Window towel warmer combines aesthetics and functionality and promotes a rational use of space in the room where it is installed.

In fact, it is equipped with a heated movable attachment, the "handle", which can rotate to be opened when needed, thus acting as a support for heating towels, or it can remain closed, if this function is not required, reducing the space occupied and emphasising the product aesthetics.

The handle opening and closing is manual.

The handle is held in the two positions (open/closed) by gas springs. Window is conceived to offer maximum comfort of use by differentiating the temperature of the handle from that of the body. The temperature of the handle is kept lower than that of the body of the towel warmer to allow it to be gripped safely without sacrificing the maximum heat output provided by the body of the towel warmer at normal operating temperatures of the heating system.

Conscious use of the product in accordance with the warnings given in section 1.0 of this document is recommended in order to avoid crushing and/or injury to the hand or fingers.

## 3. Information for the user

To clean painted radiators, use only a non-abrasive cloth soaked in water.

Never use detergents or aggressive substances. Avoid any other basic or acidic solution, chemical, industrial or other substances, aggressive or corrosive substances (bleach, ammonia, baking soda...). Do not use abrasive cloths or sponges.

## 4. Installer information

This product is subject to the general warranty conditions set forth in the current official Cordivari catalogue. The warranty is valid from the date of delivery and is void if the production batch label is tampered with and/or removed. The warranty applies after the examination of defects and their causes. The material to be replaced or repaired shall be delivered ex-warehouse at the dealer. The commitment to provide the warranty is subject to the conditions and requirements described below.

The radiator has not been damaged during transport, handling or installation and no repair and/or tampering has been carried out by third parties without express authorisation. Before installation, the material has been stored in good conditions and

under shelter from the weather. Product installation must be carried out by qualified personnel and in compliance with these instructions and all national and local regulations concerning installation and safety. Do not place the radiators in rooms with chlorine vapours or corrosive fumes, e.g. pools, saunas, thermal pools.

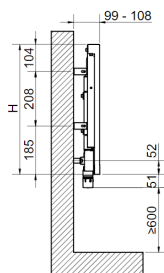
## 5. Positioning in bathrooms

Position the radiator so that no obstacle is present at a minimum distance of 100 mm and/or within the reach of the radiator handle.

It is forbidden to install the radiator inside shower enclosures or in areas where it is potentially exposed to water jets.

## 6. Wall mounting

For wall mounting of the radiator, use the specific template supplied. Follow the instructions contained in the fastening kit for assembling and adjusting the supports. The fastening systems (screws+blocks) are suitable for compact walls or hollow brick walls. For walls made of different materials, the installer is responsible for the use of suitable fastening systems.

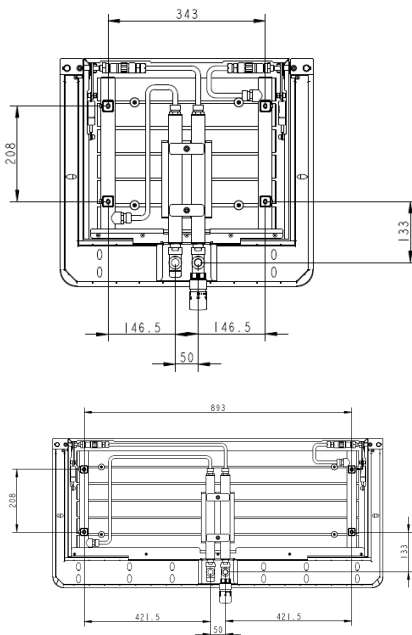


## 7. Hydraulic connection

The Window towel warmer is supplied with a valve kit with thermostatic head as standard.

The kit contains the instructions for assembly and use of the thermostatic head valves.

When the hydraulic connection to the system has been carried out, it is recommended to release air from the towel warmer by turning the no.3 bleed valves.



A proper cover, positioned by means of no.2 self-tapping screws, covers the valve body.

