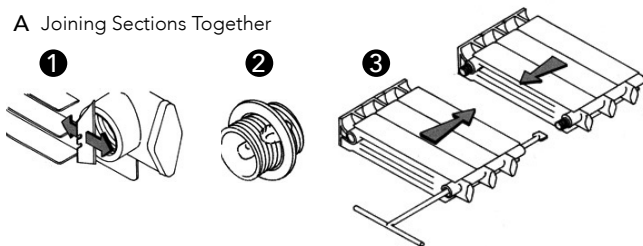
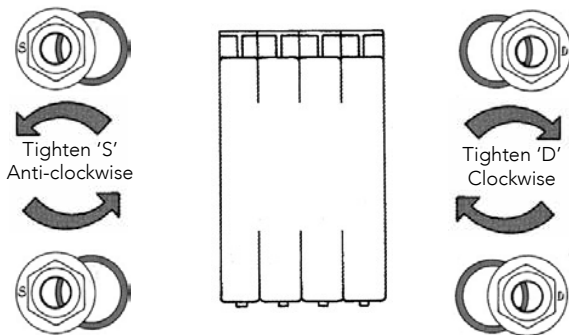


## Diagrams of Aluminium Radiators

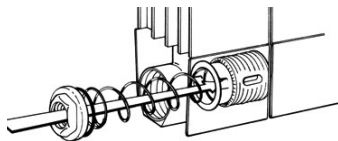
### A Joining Sections Together



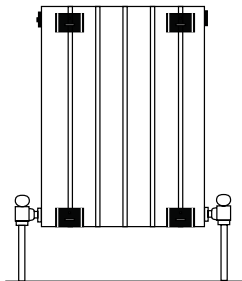
### B Standard Configuration of Bushes



### C Diverter Installation for Oscar



### D Placement of Wall Brackets



## Pipe Centres

### Pipe centres left to right

no. sections x 80mm + 20mm bushes + valves

### Pipe centres from wall

67mm to 71mm

### Depth from wall

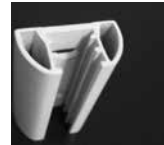
114mm to 118mm

## Brackets

E



F



G



## 1 Unpack & Inspect

The Radiator Company prides itself on selecting products from manufacturers who exercise tight quality control measures. We only select models with excellent standards of welding and brazing, as well as high quality finishes. All of our products are well packaged and should reach you in perfect condition. Just in case however, we offer a 10 year no quibble guarantee for all aluminium radiators.



Please carefully unpack and inspect this radiator and all fittings. The Radiator Company must be notified of any shortages or damage within 28 days of delivery. For further information please see terms and conditions on back page.

## 2 Contents

	up to 20 sections	21 - 30 sections	31 plus sections
• Wall Brackets	4	6	8

### 1 Fittings pack including:

- 4 Bushes with gaskets
- 1 Airvent
- 1 Blanking Plug, if your radiator requires a plug
- 1 Air vent key

### For Oscar

- All above plus 1 Spring diverter

## 3 Joining Sections

**Very long radiators may require on-site assembly.**

1. Remove excess paint from the four radiator faces to be joined together by scraping a flat knife blade across the surface.

2. Place both halves to be assembled on a flat even surface and align the joining surfaces. The radiator sections and joining nipples have one left and one right hand thread - the Nipples must be inserted correctly to avoid cross threading. **The end of the nipple with the right hand thread has a smooth edge; the end with the left hand thread has a serrated edge.** Carefully insert the barrel nipples into both waterways on one half, taking care not to damage the threads, these can be screwed in a couple of turns each. Apply a little jointing compound to the soft fibre gasket and position this gasket within the central groove on the nipple (excluding the Oscar which is a dry fit)

3. Carefully insert the joining key through the collector until it locates the barrel nipple and gradually close the halves by equal amounts until tight (please see diagram).

## 4 Fit Bushes

### IMPORTANT NOTE:

Aluminium radiators have specific left and right hand threaded bushes and these can be easily damaged if forced or incorrectly fitted (this will inevitably cause leaks). **Bushes require a dry fit connection only; you must not use any Compound materials (e.g. Jet Blue) or Plumbers Hemp.** If you choose you may use up to 4 turns of PTFE tape to help seal the threads (the tape should be applied in the direction of the thread and no more than this amount should be used as this may cause leaks to occur)

If looking directly at the front of the radiator, the two bushes with an 'S' cast on them are positioned on the left and turned anti-clockwise. The two bushes cast with a 'D' are positioned on the right and turned clockwise.

**Please see Diagram B.**

## 5 Fit Diverter (Oscar only)

Oscar radiators over 1 metre tall are supplied with a spring diverter, which is installed in the lower waterway at either end.

This is installed by pushing the cap firmly in the waterway until it locates against the barrel nipple and is retained in place by the bush. The flow must enter this end first (please see diagram C).

## 6 Mark Brackets

You will have been supplied with a suitable amount of brackets for your radiator (see picture E and Contents).

The brackets are typically positioned one section in from either end with extra brackets spaced at equal distances between these two.

The two piece brackets can be adjusted both vertically, using the large dome head screw and front to back using the two positions in which the bracket hook can be placed (see picture F and G).

## 7 End Panels (if ordered with Vip or Oscar)

If you have end panels with your radiator, these will have a chrome cap that clips on top and a black clip that slides into the panel from the bottom which will click down onto the fins to secure.

## 8 Hang Radiator & Commission

With the brackets firmly fixed and level, the radiator is lowered directly onto the brackets. Connect valves and refill system, adding the correct inhibitor and check for leaks.

**Please Note:** In accordance with Part L1 2006 of the Building Regulations and BS7593:1992 code of practice for the treatment of hot water and central heating systems, we strongly recommend flushing the heating system post installation of new radiators and then adding the correct quantity and type of inhibitor for use with your radiator and system to prevent corrosion. Damage caused to systems not protected by a suitable inhibitor will not be covered by manufacturer's guarantee.