

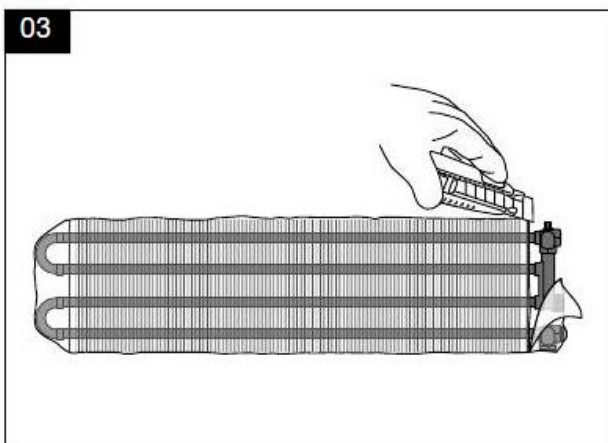
- 01** Ensure the location facilitates good heat distribution for the room and that the wall and floor is flat and sound.

02

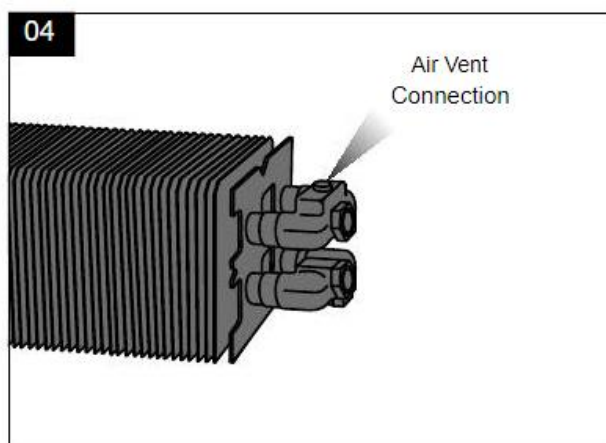
Type	B (mm)	d (mm)	h (mm)
06	85	40	100
10/11	118	53	100
15/16	168	78	120
20/21	218	103	150

NOTE: Flow and return connections can be either left hand or right hand. This can be decided at time of installation. Dimensions shown are for right hand connections. For left hand connections, dimensions are mirrored.

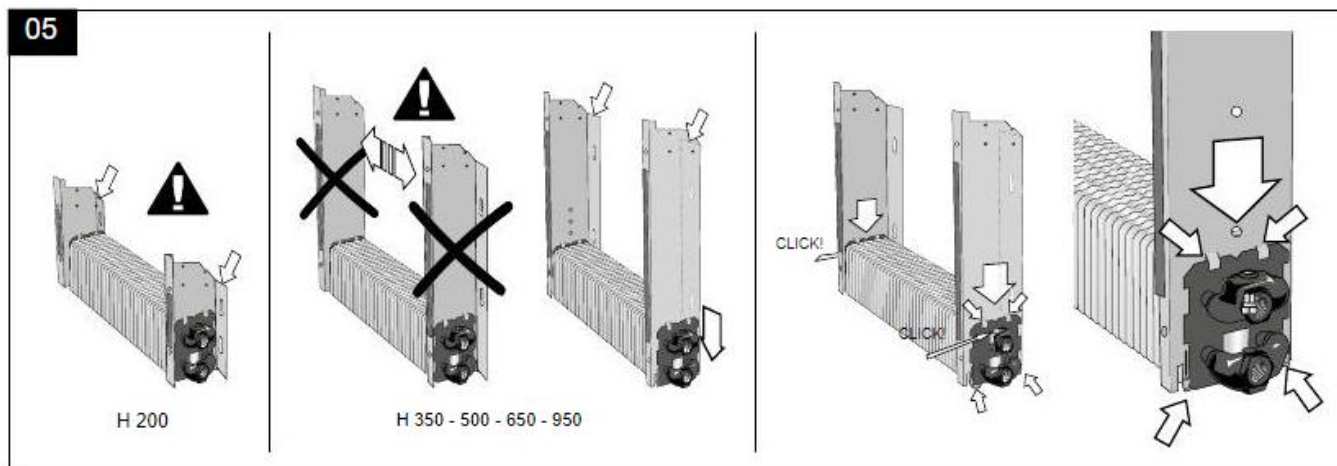
- Minimum clearance from floor to underside of casing for STRADA equals 'h' dimension.
- The supplied fixings are suitable for solid wall construction only. For other wall structures alternative fixings must be used.
- If third and fourth brackets are supplied, these are to be fitted to the central plates of the heat exchanger. Fixing centres to be marked at time of installation.



Take the heating element and remove the protective covering from the connection end only. The rest of the covering can be removed later in the process. Leaving it on at this stage protects the element from building and decoration debris.



Connection can be either on the left or right hand side, for either option, make sure the 1/8th connection for the air vent is on the top of the heating element.



Care to be taken when attaching brackets to ensure they are both the correct way round.

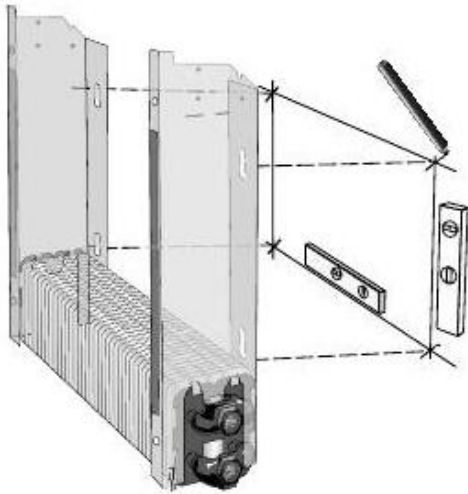
Head Office

The Radiator Centre, 7 Holywell Hill, St Albans, AL1 1EU

Tel: 01727 840344

TheRadiatorCentre.com

06

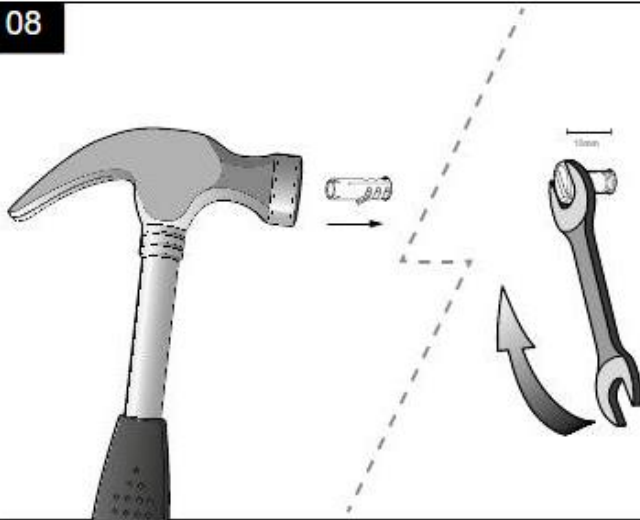


07



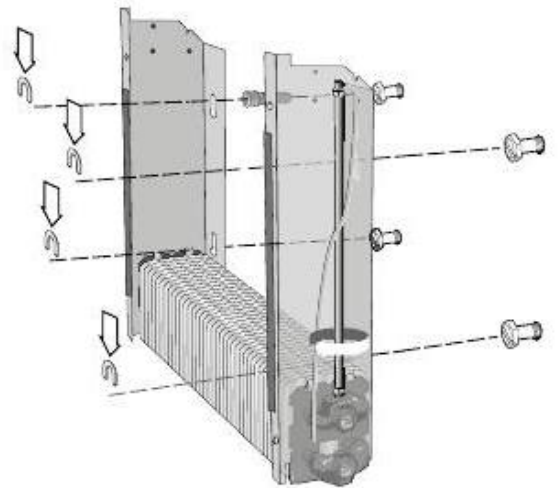
Drill 8mm holes at the marked centres.

08



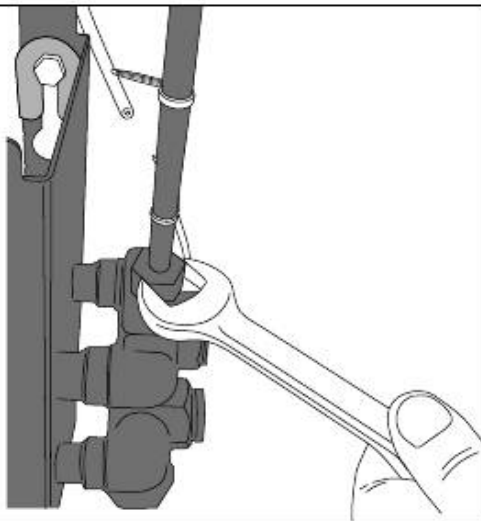
Insert wall plugs into the holes, then insert screws and tighten leaving 10mm protruding.

09



Fix the element assembly to the wall with the fixings provided. Depending on the wall construction, other fixings may be required.

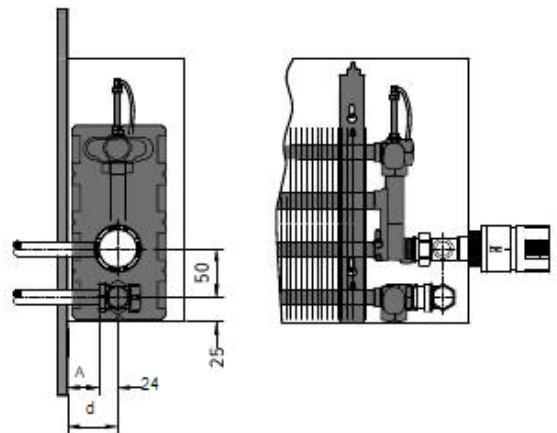
10



Fit the air vent to the top 1/8th connection and moderately tighten.

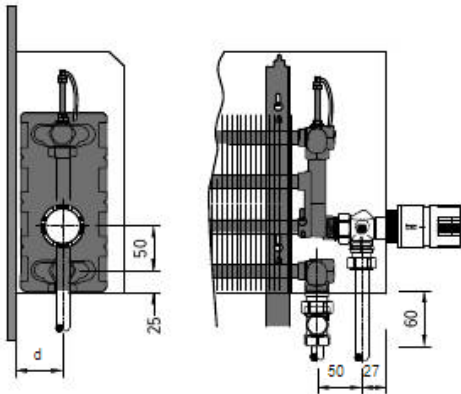
11a

Example with Jaga valve: to the wall.



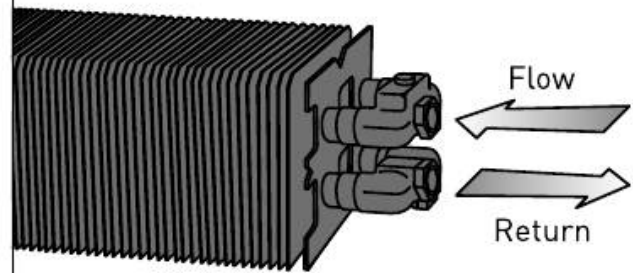
The valves can now be fitted as per the option chosen; as illustrated.

11b Example with Jaga valve: to the floor.



Type	Connection to floor d (mm)	Connection to wall A (mm)
06	40	18
10/11	53	29
15/16	78	53
20/21	103	79

12



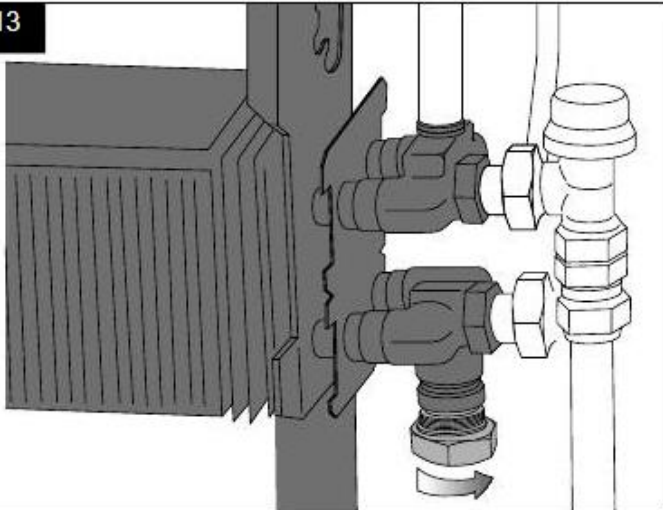
50 27

It is important for correct operation that the thermostatic radiator valve is fitted to the flow, into the higher connection of the element. The lockshield valve should be connected to the return, into the lower connection.



If incorrectly connected, the heating performance will be reduced and the thermostatic radiator valve may vibrate / chatter.

13



The blanking plug can now be fitted to the unused connection.

14



The installation is now complete and can be pressure tested to a maximum 10 bar.

Head Office

The Radiator Centre, 7 Holywell Hill, St Albans, AL1 1EU

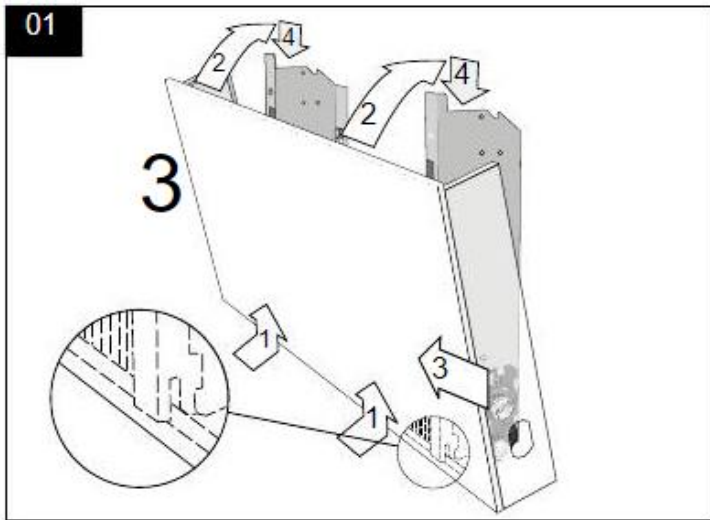
Tel: 01727 840344



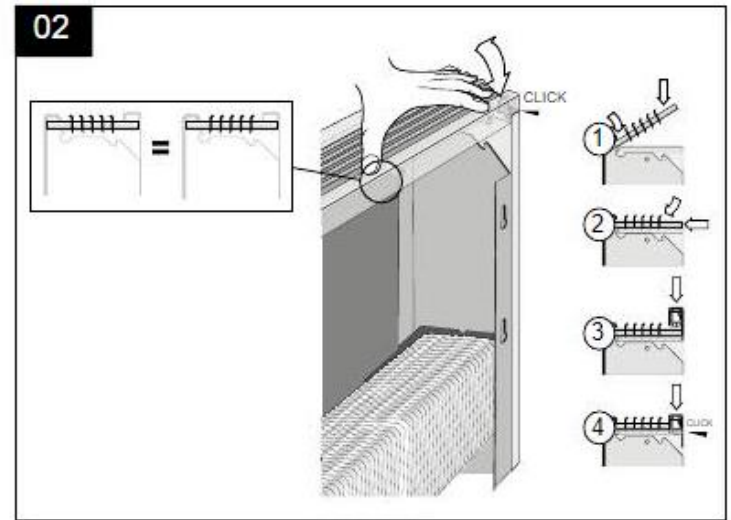
Important Note:

Once the radiator has been fully pressure tested, the system should be cleaned and flushed in accordance with the relevant standard.

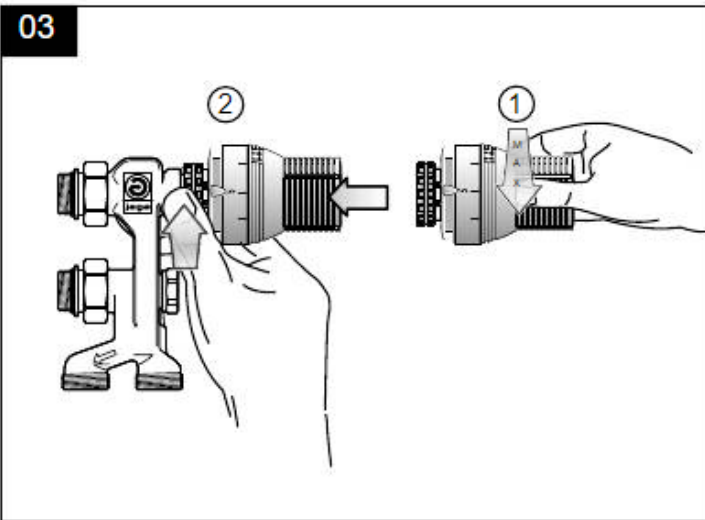
The radiator should not be left empty (after the cleaning and flushing) for any prolonged period.



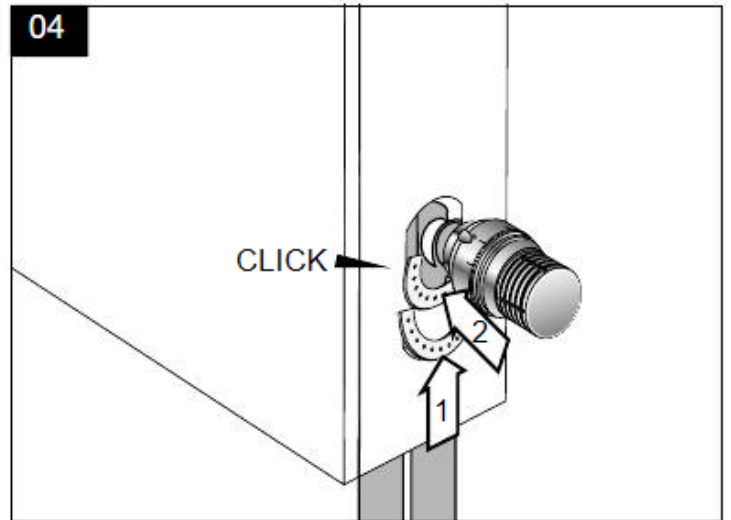
Hook casing onto bottom of bracket. Lift casing up and over towards back. Line up cut out with valve. Push casing down onto brackets to secure.



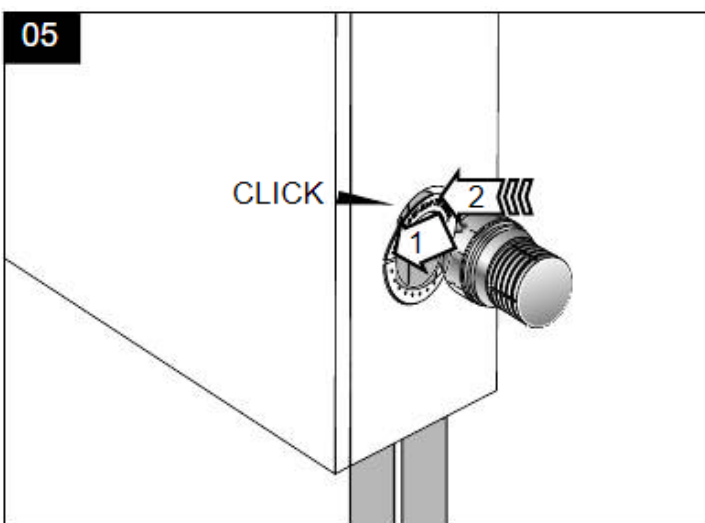
Locate the grille into front panel, lower down into position and fix back bar.



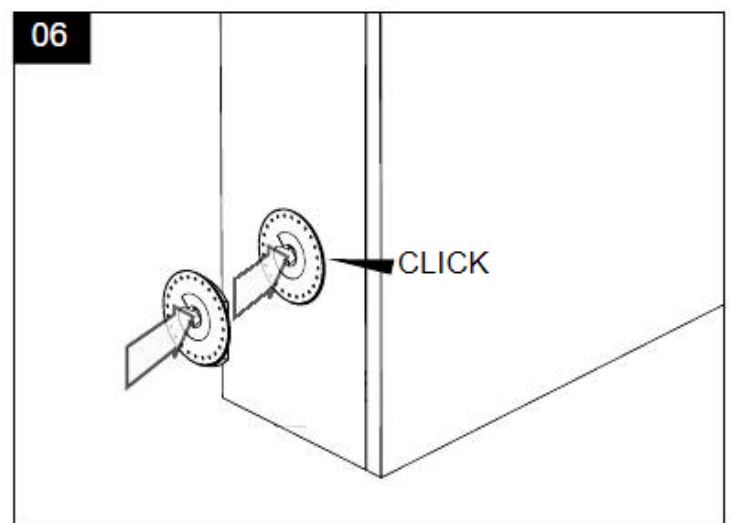
Fit the TRV head, ensuring that it is first turned to its maximum setting. Please follow the TRV head installation instructions for further information.



Insert the first half moon decorative clip.



Insert the second half moon decorative clip.



Use blanking plate on opposite side.

The Radiator Centre reserves the right to alter design, specifications and prices without prior notice.

All prices shown exclude VAT. All sales are subject to our standard Terms and Conditions which can be found on www.theradiatocentre.com All heat outputs are shown at an operating temperatures of 75/65/20 ($\Delta t50^\circ$).

To recalculate to show at 90/70/20 ($\Delta t60^\circ$) multiply by 1.264.

All radiators will be supplied with the necessary fixture and fittings - brackets, air vents, etc.

Valves are not included in the prices quoted above

Head Office

The Radiator Centre, 7 Holywell Hill, St Albans, AL1 1EU

Tel: 01727 840344